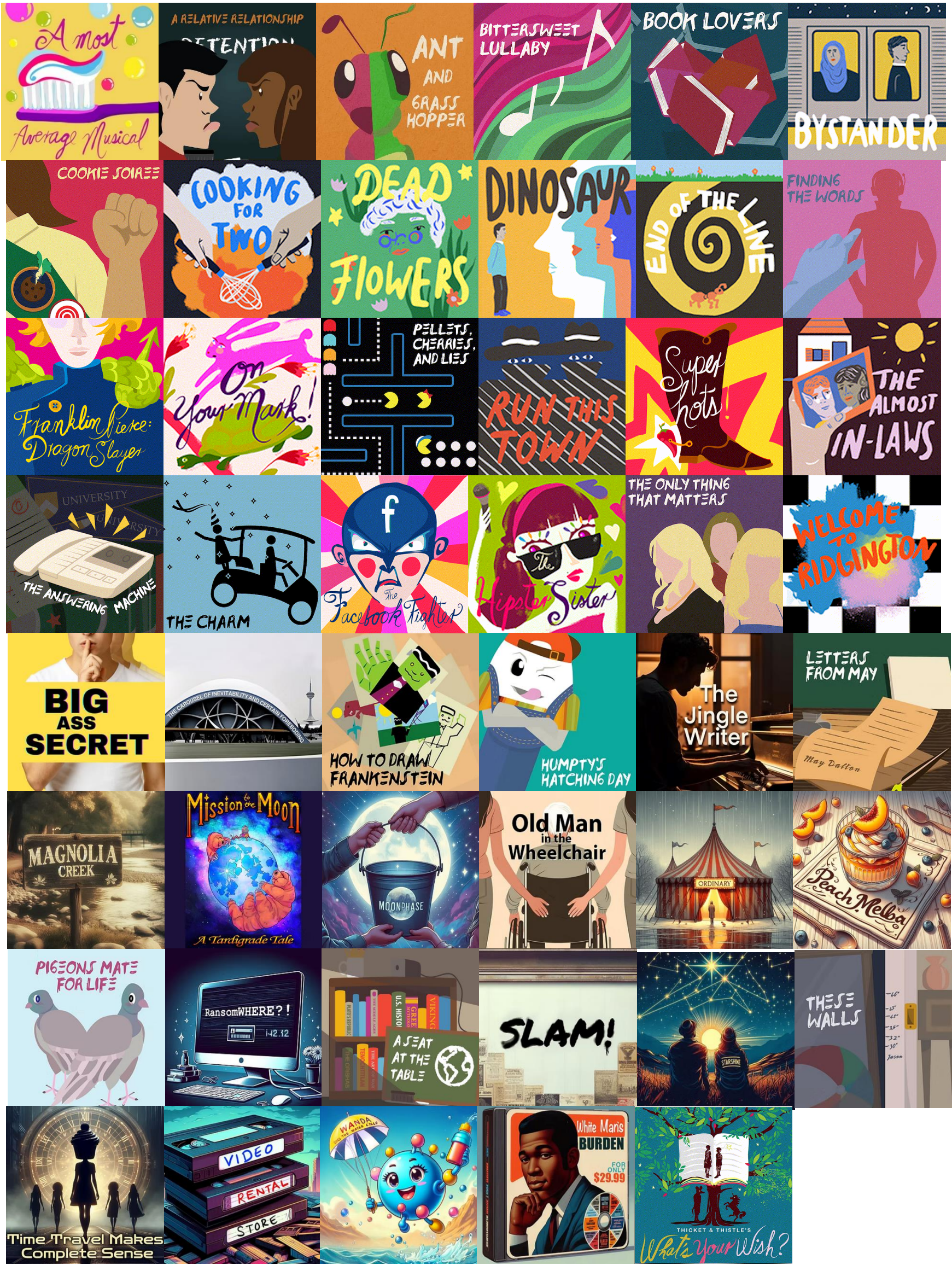


10 MINUTE MUSICALS

47 Staged Productions - 200+ Principals + Ensemble



10 MINUTE MUSICALS

47 Staged Productions - 200+ Principals + Ensemble

<p>A Most Average Musical</p> <p>First Friday night at college: will it be extraordinary, pathetic, or just average? Follow Jenny, her three roommates, and their quirky neighbor Charlie through an evening of highs and lows as they discover that sometimes average is extraordinary, too.</p> <p>Target Audience: Teen (Age 14 - 18), Young Adult (Age 18 - 23), Adult</p> <p>Cast Size: 1M, 4F</p> <p>Setting: College Dorm; Present</p> <p>Themes: College Life; Friendship; Self-Acceptance; Relationships</p> <p>Subgenre Romantic Comedy</p> <p>Style: Contemporary Musical Theatre</p> <p>Caution: Mild Language</p> <p>Duration: Approx 10 minutes</p> <p>Additional Resources: Accompaniment Tracks</p>	<p>A MOST AVERAGE MUSICAL</p> <ul style="list-style-type: none">- Billing Credits- Libretto- Piano / Vocal Score- Single, Color Logo Artwork (JPEG)- Performance Accompaniment Tracks w/ Cue Sheet- Orchestrations: o Piano; o Electric Bass; o Drums <ul style="list-style-type: none">• JENNY: 18, Female identifying. An average girl who wants her life to be extraordinary.• LIZ: 18, Female identifying. A want-to-be sorority girl who craves status.• GWEN: 18, Female identifying. An ambitious student who wants to land a prized internship.• MELANIE: 18, Female identifying. A romantic who wants her tinder date to be perfect.• CHARLIE: 18, Male identifying. Jenny’s awkward neighbor who desperately needs to find a toothbrush.
<p>A Relative Relationship</p> <p>Eighth graders Simon Pang and Carmen Soledad are in big trouble. They've been caught cheating on their class final.</p> <p>Target Audience: Teen (Age 14 - 18), Young Adult (Age 18 - 23), Adult</p> <p>Cast Size: 1M, 2F</p> <p>Setting: Junior High/Vice Principal’s Office; Present</p> <p>Themes: Adolescence/Childhood; Friendship; Love; Marriage</p> <p>Subgenre Farce; Cartoon; Violence</p> <p>Style: Contemporary Musical Theatre</p> <p>Caution: Mild Language</p> <p>Duration: Approx 10 minutes</p> <p>Additional Resources: Accompaniment Tracks</p>	<p>A RELATIVE RELATIONSHIP</p> <ul style="list-style-type: none">- Billing Credits- Libretto- Piano / Vocal Score- Single, Color Logo Artwork (PNG)- Performance Accompaniment Tracks w/ Cue Sheet <ul style="list-style-type: none">• Carmen Soledad - 15 years old. 9th grade. Girl. Of Ecuadorean ancestry. Third or fourth generation. i.e., American. A princess to her father, to everyone else, something decidedly-less. She should be played by a grown woman.• Simon Pang - 15 years old. 9th grade. Boy. Korean American. 2nd Generation. Not a band geek, but not really cool either. Likes rules. Studies. He should be played by a grown man.• Vice Principal Delancy - Somewhere between Sue Sylvester and Dr. Perry Cox, Professor Moriarty and Wyle E. Coyote, Vice Principal Delancy is the marriage of insensitivity with bitterness, dispassion and sadism all wrapped in a warm, fuzzy poncho of be quiet. <p>Note: While these roles were originally intended to be played by adults, they could be played by actors 15 years and older.</p>
<p>Ant and Grasshopper</p> <p>Hardworking, miserable Ant meets fun-loving, irresponsible Grasshopper. Together they learn that everyone needs both discipline and creativity, and that life is better shared with a friend!</p> <p>Target Audience: Young Children (Age 2-5), Children (Age 6 - 10)</p> <p>Cast Size: 1M, 1F (Flexible)</p> <p>Setting: A Forest, Yesterday</p> <p>Themes: Friendship, Adolescence/Childhood</p> <p>Subgenre: Theatre for Young Audiences, Fables/Folklore</p> <p>Style: Classical Musical Theatre</p> <p>Duration: Approx 10 minutes</p> <p>Additional Resources: N/A</p>	<p>ANT AND GRASSHOPPER</p> <ul style="list-style-type: none">- Billing Credits- Libretto- Piano / Vocal Score- Single, Color Logo Artwork (PNG)2 Characters, Flexible casting. <ul style="list-style-type: none">• ANT - Hardworking, serious, miserable. Always puts duty first, but wishes for more (mezzo-soprano).• GRASSHOPPER - Carefree, fun-loving, irresponsible. Cares more about having a good time than planning for the future (bari-tenor).
<p>Bittersweet Lullaby</p> <p>Two struggling songwriters live in the same apartment decades apart. In one magical night, their voices connect through time and they begin a collaboration that leaves them forever changed.</p> <p>Target Audience: Appropriate for all audiences</p> <p>Cast Size: 1M, 1F</p> <p>Setting: An NYC Small Apartment; Simultaneously 1957 and present day</p> <p>Themes: Theatre/Entertainment Industry; Writing & Composing; Friendship; Parenting; Family</p> <p>Subgenre Fantasy; Science Fiction; Period; Mystery</p> <p>Style: Classic/Standard Musical Theatre</p> <p>Caution: Mild Language</p> <p>Duration: Approx 10 minutes</p> <p>Additional Resources: Accompaniment Tracks</p>	<p>BITTERSWEET LULLABY</p> <ul style="list-style-type: none">- Billing Credits- Libretto- Piano / Vocal Score- Single, Color Logo Artwork (PNG)- Performance Accompaniment Tracks w/ Cue Sheet <ul style="list-style-type: none">• MAN: Aspiring composer/lyricist living in the 1950’s.• WOMAN: Aspiring composer/lyricist living in present day.
<p>Book Lovers</p> <p>Charlotte is secretly in love with the librarian. She rejects the idea of romance until three of literature's "greatest" lovers escape from their books to convince her to take a chance on love.</p> <p>Target Audience: Appropriate for all audiences</p> <p>Cast Size: 3M, 4F</p> <p>Setting: A library in your town; present</p> <p>Themes: Love; Fairy Tales; Literature</p> <p>Subgenre Romantic Comedy</p> <p>Style: Classic/Standard Musical Theatre</p> <p>Duration: Approx 10 minutes</p> <p>Additional Resources: Accompaniment Tracks</p>	<p>BOOK LOVERS</p> <ul style="list-style-type: none">- Billing Credits- Libretto- Piano / Vocal Score- Single, Color Logo Artwork (PNG)- Performance Accompaniment Tracks w/ Cue Sheet- Orchestrations: o Piano; o Double Bass; o Violin <ul style="list-style-type: none">• CHARLOTTE: A book lover. She probably drinks tea and has cats. Mixed/Belter, A2 - E4• DEWEY: A librarian. No one understands the jokes on his t-shirts. Tenor, C2-G3• CYRANO DE BERGERAC: Puts on airs. Big nose. Tenor, C2-G3• HELEN OF TROY: Brassy. Beautiful. Alto/Belter, G#2-D4• JULIET CAPULET: Innocent. Obsessed with death. Mixed/Soprano, C3 - E4• HESTER PRYNNE: A loose woman. Character voice. Chorus.• SIR LANCELOT: Oh man. This dude. Character voice. Chorus.

<div><div>Bystander</div><div>On a late-night subway, a passenger accuses a young woman wearing a hijab of terrorism, which puts the only other rider in a precarious situation.</div><div>Target Audience: Teen (Age 14 - 18), Adult</div><div>Cast Size: 1M, 2F</div><div>Setting: On the Q train to Brooklyn; Present</div><div>Themes: Religion, Current Events; Politics</div><div>Subgenre Contemporary; Realistic Fiction</div><div>Style: Contemporary Musical Theatre</div><div>Caution: Mild Adult Themes</div><div>Duration: Approx 10 minutes</div><div>Additional Resources: N/A</div></div>	<div><div>BYSTANDER</div><div>- Billing Credits</div><div>- Libretto</div><div>- Piano / Vocal Score</div><div>- Single, Color Logo Artwork (JPEG)</div><div><ul style="list-style-type: none">ANNA: Female Identifying, 18-35, nervous, and frightened.NIAZ: Female Identifying, 18-35, confident Muslim who wears a hijab.DOUG: Male Identifying, 18-35, nervous, scared and belligerent.SUBWAY ANNOUNCER: Subway worker, unseen.</div></div>
<div><div>Cookie Soiree</div><div>Raquel, Gretel, and Sandy are everyone’s favorite girl scouts. Most days they can be seen outside the Walmart in Sugar Land, Texas selling their cookies. They’re so close to getting their cookie badges when two local troublemakers rob their moneybox! They may just be kids, but these three scouts prove that even the smallest packages can pack a big punch.</div><div>Target Audience: Teen (Age 16 - 18), Young Adult (Age 18 - 23), Adult</div><div>Cast Size: 2M, 3F</div><div>Setting: Various Locations in Sugarland, TX; April 2012</div><div>Themes: Resilience; Youth Empowerment; Friendship; Teamsork</div><div>Subgenre Adventure</div><div>Style: Contemporary Musical Theatre</div><div>Caution: Gun Use; Mild Language</div><div>Duration: Approx 10 minutes</div><div>Additional Resources: Accompaniment Tracks</div></div>	<div><div>COOKIE SIOREE</div><div>- Billing Credits</div><div>- Libretto</div><div>- Piano / Vocal Score</div><div>- Single, Color Logo Artwork (PNG)</div><div>- Performance Accompaniment Tracks w/ Cue Sheet</div><div><ul style="list-style-type: none">RAQUEL: Latinx or Black/African American. 12 years old. Leader of the girl scouts. She takes her job seriously and keeps the other girls on task. Raquel helps the girls “do the right thing” when they get robbed. Strong musical theatre mix/belt.GRETEL: Caucasian. 12 years old. She’s usually seeking the group’s approval doing whatever she can to fit in. Gretel has a lot of heart, but won’t hesitate to kick you in the face with her combat boots if you mess with her or her friends. She’s crushing hard on Sandy and may or may not realize. Strong musical theatre mix/belt.SANDY: Asian-American or Pacific Islander. An enthusiastic scout with wacky marketing ideas. She’s an excellent shot with a bow and arrow and won’t hesitate to kick your butt if you get in between her and her friends or money box. Strong musical theatre mix/belt.BRODY/BILLY: Any ethnicity. 18 years old. A local troublemaker who wants to teach the girl scouts that life isn’t always sweet and sunny. Billy is another troublemaker.MARCUS/DEREK: Any ethnicity. 18 years old. He is Brody’s friend, who steals the girls’ money box. A troublemaker. Derek is another troublemaker.</div><div>For the Girl Scouts, performers should be femme identifying, not limited to binary; gender conscious. For the Troublemakers, performers should be masc identifying, not limited to binary; gender conscious.</div></div>
<div><div>Cooking For Two</div><div>It's the first season finale of Food Network's latest, Tasty Time with Jenny and Brett - but as the cameras roll, the eponymous couple's cheery facade starts to crack. When Jenny tries to end the show in a desperate bid to save their marriage, Brett must confront a terrifying choice: relationship or career?</div><div>Target Audience: Appropriate for all audiences</div><div>Cast Size: 1M, 1F, 1A</div><div>Setting: A TV Show at Chelsea Piers; Present</div><div>Themes: Marriage; Reality TV</div><div>Subgenre Parody/Spoof; Romantic Comedy</div><div>Style: Contemporary Musical Theatre</div><div>Caution: Mild Adult Themes; Alcohol Reference</div><div>Duration: Approx 10 minutes</div><div>Additional Resources: N/A</div></div>	<div><div>COOKING FOR TWO</div><div>- Billing Credits</div><div>- Libretto</div><div>- Piano / Vocal Score</div><div>- Single, Color Logo Artwork (JPEG)</div><div>- Performance Accompaniment Tracks w/ Cue Sheet</div><div><ul style="list-style-type: none">BRETT - 30’s, male identifying. Favorite dish: grilled salmon steak with hoisin BBQ.JENNY - 30's, female identifying. Favorite dish: anything with chocolate.NAMELESS PA - 20’s, Any gender. Favorite dish: Cymbalta.</div></div>
<div><div>Dead Flowers</div><div>At age 82, Polly Patolsky believes she is meant to spend the rest of her days with her unfaithful and manipulative husband, Charlie. But on the worst day of her life (and her marriage), Polly reaches a breaking point and finds strength and courage in a strange place with an unlikely new friend.</div><div>Target Audience: Sr, Adult, Young Adult (Age 18 - 23)</div><div>Cast Size: 2M, 2F, Chorus</div><div>Setting: House Boca Raton / Raging Bull Bar; Present</div><div>Themes: Aging; Betrayal; LGBTQ+ Interest; Marriage; Memory; Woman’s Interest; Sexuality; Feminism</div><div>Subgenre Memory Play</div><div>Style: Contemporary Musical Theatre</div><div>Caution: Strong Adult Themes; Alcohol Ref; Language</div><div>Duration: Approx 10 minutes</div><div>Additional Resources: N/A</div></div>	<div><div>DEAD FLOWERS</div><div>- Billing Credits</div><div>- Libretto</div><div>- Piano / Vocal Score</div><div>- Single, Color Logo Artwork (JPEG)</div><div>- Performance Accompaniment Tracks</div><div>- Orchestrations: o Piano; o Keyboard II; o Drums; o Electric Bass: o Percussion</div><div><ul style="list-style-type: none">POLLY PATOLSKY: 82-year-old timid housewife, the hero and protagonist of the story; AltoJAVIER DELAROSA: 24 years old, a young and vibrant Hispanic drag queen; TenorCHARLIE PATOLSKY: 84 years old, Polly’s domineering husband; BaritoneETHEL WEINBLATT: 72 years old, Polly’s “closest” friend; AltoGAGGLE OF GAYS: Small queer ensemble of all ages and genders; Vocal parts can vary</div></div>
<div><div>Dinosaur</div><div>A portrait of the average millennial's struggle to find dating success in the era of social media. Set in a bar, we follow a young man's various attempts to connect with strangers, until someone unexpectedly tries to connect with him.</div><div>Target Audience: Young Adult (Age 18 - 23), Adult</div><div>Cast Size: 2M, 2F</div><div>Setting: A bar in New York City</div><div>Themes: Dating; Relationships; Connection</div><div>Subgenre Romantic Comedy</div><div>Style: Contemporary Musical Theatre</div><div>Caution: Alcohol Use; Mild Adult Themes & Language</div><div>Duration: Approx 10 minutes</div><div>Additional Resources: N/A</div></div>	<div><div>DINOSAUR</div><div>- Billing Credits</div><div>- Libretto</div><div>- Piano / Vocal Score</div><div>- Single, Color Logo Artwork (JPEG)</div><div><ul style="list-style-type: none">BEN - Male Identifying, mid 20’s, heartbroken, neurotic, his nature is to apologize for who he is but has the ability to let go in make-or-break situations.JULIE - Female Identifying, mid 20’s sincere, vulnerable, raw honesty is her default but she sees the best in everyone, her empathy is boundless.SARA - Female Identifying, late 20’s, Ben's sister, caring, joyous, a people-pleaser who lives with abandon (non-singing role).MARK - Male Identifying, late 20’s Sara's Fiancé, goofy, mischievous, desperately wants Ben to come out of his shell. late 20s (non-singing role).</div></div>

<div>End of The Line</div> <div>Four worker ants set out on a routine mission to retrieve tasty morsels for their colony and end up on the quest of a lifetime. When faced with a fork in the road, will they return home empty handed or receive a hero’s welcome for discovering the “legendary stuff” long prophesied by their ancestors?</div> <div>Target Audience: Appropriate for all audiences</div> <div>Cast Size: 2M, 2F</div> <div>Setting: A parking lot outside a 7/11 store; July 2013</div> <div>Themes: Aging; Death; Friendship; Memory; Religion; Purpose; Bravery</div> <div>Subgenre: Theatre for Young Audiences</div> <div>Style: Classic/Standard Musical Theatre</div> <div>Caution: None</div> <div>Duration: Approx 11 minutes</div> <div>Additional Resources: N/A</div>	<div>END OF THE LINE</div> <div>- Billing Credits</div> <div>- Libretto</div> <div>- Piano / Vocal Score</div> <div>- Single, Color Logo Artwork (JPEG)</div> <div>• STACY - A senior worker ant. Wise and disciplined with a youthful optimism.</div> <div>• TAYLOR - A young worker ant. Naive and fearful. Loves the Queen.</div> <div>• ALEX - An experienced worker ant. Second in command. No funny business.</div> <div>• SQUIRT - A new worker ant. This is his first day on the job.</div>
<div>Finding the Words</div> <div>It's the final rehearsal at a small regional theater, and the lead actor STILL can't remember his lines. Only the director's klutzy assistant can help save the show.</div> <div>Target Audience: Pre-Teen (Age 11 - 13), Teen (Age 14 - 18), Adult</div> <div>Cast Size: 3M, 2F, 1A</div> <div>Setting: A Regional Theatre, Present</div> <div>Themes: Regret, LGBTQ+ Interest, Dating, Theatre/Entertainment Industry</div> <div>Subgenre: Romantic Comedy</div> <div>Style: Contemporary Musical Theater</div> <div>Caution: Mild Language</div> <div>Duration: Approx 11 Minutes</div> <div>Additional Resources: Accompaniment Tracks</div>	<div>FINDING THE WORDS</div> <div>- Billing Credits</div> <div>- Libretto</div> <div>- Piano / Vocal Score</div> <div>- Single, Color Logo Artwork (PNG)</div> <div>- Performance Accompaniment Tracks w/ Cue Sheet</div> <div>• FANNY - 20's to 30's, female-identifying, Sweet, funny, alto</div> <div>• TONY - 20's to 30's, male-identifying, classic young male lead type, like a Prince Charming type. Tenor, both pop-rock and legit.</div> <div>• MORTY - 60's to 80's, wise-cracking Borscht Belt-type. Non-singing.</div> <div>• DESIREE - 20's to 40's, a total diva. High soprano.</div> <div>• STEVE - 20's to 40's, male-identifying, a soft-spoken, cool techie. Non-singing.</div> <div>• STAGEHAND - Any age. A stagehand, one line. Non-singing.</div>
<div>Franklin Pierce Dragon Slayer</div> <div>When eighth-grader Jennifer is assigned Franklin Pierce for her class's President's Day project, she's bummed to have gotten one of the history's most forgettable presidents. However, late that night Franklin himself visits Jennifer to tell her the real truth behind his presidency.</div> <div>Target Audience: Appropriate for all audiences</div> <div>Cast Size: 1M,1F</div> <div>Setting: Bedroom at night, Present</div> <div>Themes: Adolescence, Politics</div> <div>Subgenre: Fantasy, Science Fiction</div> <div>Style: Classic, Standard Musical Theatre</div> <div>Caution: N/A</div> <div>Duration: Approx 10 Minutes</div> <div>Additional Resources: Accompaniment Tracks</div>	<div>FRANKLIN PIERCE DRAGON SLAYER</div> <div>- Billing Credits</div> <div>- Libretto</div> <div>- Piano / Vocal Score</div> <div>- Single, Color Logo Artwork (JPEG)</div> <div>- Performance Accompaniment Tracks w/ Cue Sheet</div> <div>- Orchestrations: o Piano; o Bass; o Drums</div> <div>• JENNIFER: A jadeed eighth grader. Practical, subdued which reflects in her style.</div> <div>• FRANKLIN PIERCE: Literally the former president.</div>
<div>On Your Mark!</div> <div>A contemporary re-imagining of the Aesop Fable 'The Tortoise and the Hare,' this fun new show takes the familiar classic and exposes the truth behind this infamous woodland race.</div> <div>Target Audience: Appropriate for all audiences</div> <div>Cast Size: 2M, 2F, 1A (Flex to 10)</div> <div>Setting: Woodland Critters Race, the forest</div> <div>Themes: Business, Fairy Tales, Friendship, Parenting, Economic/Financial Interest</div> <div>Subgenre: Theatre For Young Audiences Fantasy Fables/Folktales</div> <div>Style: Classic, Standard Musical Theatre</div> <div>Caution: N/A</div> <div>Duration: Approx 12 Minutes</div> <div>Additional Resources: N/A</div>	<div>ON YOUR MARK</div> <div>- Billing Credits</div> <div>- Libretto</div> <div>- Piano / Vocal Score</div> <div>- Single, Color Logo Artwork (JPEG)</div> <div>- Performance Accompaniment Tracks w/ Cue Sheet</div> <div>Orchestrations: o Full Score; o Piano; o Bass Guitar;o Clarinet Bb; o Drums; o E Bass; o Flute; o Tenor Saxophone; o Upright Bass; o Violin</div> <div>• HARE - Sharp, spritely, determined and practical. Our heroine.</div> <div>• TORTOISE - A large, shadowy figure. Mysterious, full of ulterior motives. Holds all the power in the forest.</div> <div>• BADGER - Sneaky and conniving. A financial vulture. Raises the rent on the hare family because he can.</div> <div>• ENSEMBLE 1 - Plays Mrs. Fox, a sportscaster, Mother Hare, a kindly old mother, and one of the Tortoise’s lackeys.</div> <div>• ENSEMBLE 2 - Plays Jamie The Fox, a sportscaster, Father Hare, a kindly old father, and one of the Tortoise’s lackeys.</div>
<div>Pellets, Cherries, and Lies</div> <div>In this heart-wrenching tale of addiction, a legendary video game golden boy must struggle to keep his family together while dealing with his late night binges. With the help of his wife, Ms. Pac-Man and his son, Junior, can Pac-Man free himself of his disease, or will he succumb to the seductions of Sue and her fellow ghosts?</div> <div>Target Audience: Appropriate for all audiences</div> <div>Cast Size: 2M, 2F, Chorus 1-3</div> <div>Setting: Mrs Pac-Man’s Living Room</div> <div>Themes: Love, Addiction, Parenting/Family, Marriage</div> <div>Subgenre: Farce, Fantasy, Adaptation, Parody/Spoof</div> <div>Style: Contemporary Musical Theatre</div> <div>Caution: N/A</div> <div>Duration: Approx 10 Minutes</div> <div>Additional Resources: Accompaniment Tracks</div>	<div>PELLETS, CHERRIES, AND LIES</div> <div>- Billing Credits</div> <div>- Libretto</div> <div>- Piano / Vocal Score</div> <div>- Single, Color Logo Artwork (PNG)</div> <div>- Performance Accompaniment Tracks w/ Cue Sheet</div> <div>• MS. PAC MAN: Female, Soprano – Caring wife and mother with a past.</div> <div>• PAC MAN: Male, Baritone – Strung-out pellet addict in denial.</div> <div>• JUNIOR PAC MAN: Male, Tenor – Emo kid with a secret.</div> <div>• SUE THE GHOST: Female, Alto/Mezzo – Ghostly seductress of Pac Man.</div> <div>• INKY, BLINKY, and PINKY: Female, Alto/Mezzo/Soprano – A trio of ghosts and Sue’s back-up singers.</div> <div>• OFF-STAGE VOICES and MARIO, Q-BERT, TAPPER, & FROGGER</div> <div>Note: INKY, BLINKY, and PINKY are optional cast members and can be omitted if necessary. Actors playing SUE THE GHOST, INKY, BLINKY, and PINKY can double the roles of OFF-STAGE VOICES, MARIO, Q-BERT, TAPPER, and FROGGER.</div>

<div><div>Run This Town</div><div>A jazzy comedy about a gangster in the 1920s who is frustrated with his friends and accomplices, and wants to work with and learn from a pro. However, he soon realizes people aren't always who they seem to be, and sometimes your friends are your best partners.</div><div>Target Audience: Appropriate for all audiences</div><div>Cast Size: 3M, 3F, 3A</div><div>Setting: Chicago, 1925</div><div>Themes: Business, Friendship, Politics</div><div>Subgenre: Parody/Spoof</div><div>Style: Classic/Standard Musical Theatre</div><div>Caution: Mild Adult Themes, Alcohol References</div><div>Duration: Approx 10-12 Minutes</div><div>Additional Resources: N/A</div></div>	<div><div>RUN THIS TOWN</div><div>- Billing Credits</div><div>- Libretto</div><div>- Piano / Vocal Score</div><div>- Single, Color Logo Artwork (JPEG)</div><div><div><div>BIG AL - Male Identifying, a gangster modeled after a young Al Capone, who is the protagonist of the piece, but is definitely more goofy than threatening.</div><div>HAIRDO SISTERS - Three, Female Identifying/non-binary “Andrews Sisters” type singers in a 1920’s jazz club.</div><div>ONE-EYES PETE - Male Identifying, a burly, over-confident gangster who is not who he appears to be. Donald Trump, but a 1920’s gangster character version.</div><div>GANGSTERS #1 and #2 – any gender – goofy gangsters who are terrible at committing crimes</div><div>SHADY MAN – Male Identifying, accomplice to One-Eyed Pete, slightly mysterious, but never very threatening.</div></div><div>Note: The roles of HAIRDO SISTERS and GANGSTERS #1 AND #2 can be played by the same actors.</div></div></div>
<div><div>Superhots!</div><div>Superhots! takes place in a fictional town in Texas where the sun is hot, but the salsa's hotter. This comedic 10-minute musical looks at the politics of competitive hot pepper growing in a small town. The organic farmer, Taylor, wants to win the heart of the local restaurant owner, (and hot tamale) Carlotta, but the villainous Pepper Pete has other plans.</div><div>Target Audience: Pre-Teen (Age 11 - 13), Teen (Age 14 - 18), Young Adult (Age 18 - 23)</div><div>Cast Size: 2M, 1F, 3+ Flex Ensemble</div><div>Setting: Restaurant in Texas, Present</div><div>Themes: Business, Friendship, Love, Economic/Financial Interest, Food</div><div>Subgenre: Farce, Parody/Spoof, Romantic Comedy</div><div>Style: Classic/Standard Musical Theatre</div><div>Caution: Mild Adult Themes</div><div>Duration: Approx 12 Minutes</div><div>Additional Resources: N/A</div></div>	<div><div>SUPERHOTS</div><div>- Billing Credits</div><div>- Libretto</div><div>- Piano / Vocal Score</div><div>- Single, Color Logo Artwork (JPEG)</div><div>- Performance Accompaniment Tracks w/ Cue Sheet</div><div>- Orchestrations: o Piano; o Percussion; o Cello</div><div><div>TAYLOR: Late 20s, an earnest organic farmer</div><div>CARLOTTA: Late 20s, chef and proprietor of “Carlotta’s Cantina,” a beloved local restaurant</div><div>PEPPER PETE: Mid 50s, insists on being referred to as a successful Texan businessman, because “an entrepreneur” sounds “too French.”</div><div>SUPERHOT FRIEND: Super friendly, member of “The Superhots” singing troupe</div><div>SUPERHOT VILLAGER: Super local, loves supporting farm-to-table industry, member of “The Superhots”</div><div>SUPERHOT SINGER: Super confused, not into spicy food, but still a proud member of “The Superhots”</div></div></div>
<div><div>The Almost In-Laws</div><div>Des has to introduce his fiancée to his parents, and they're, well... elves.</div><div>Target Audience: Appropriate for all audiences</div><div>Cast Size: 2M, 2F</div><div>Setting: A forest near Delaware. Not Xmas Time</div><div>Themes: Family, Relationships, Acceptance, Marriage</div><div>Subgenre: Christmas/Holiday, Fantasy</div><div>Style: Contemporary Musical Theatre</div><div>Duration: Approx 11 minutes</div><div>Additional Resources: Accompaniment Tracks</div></div>	<div><div>THE ALMOST IN-LAWS</div><div>- Billing Credits</div><div>- Libretto</div><div>- Piano / Vocal Score</div><div>- Single, Color Logo Artwork (JPEG)</div><div>- Performance Accompaniment Tracks w/ Cue Sheet</div><div><div>DES - Late 20s, an average city-dwelling man, Jennifer’s fiancé.</div><div>JENNIFER - Late 20s, a smart city-dwelling woman, Des’ fiancée.</div><div>MOTHER - Looks 50s, Des’ mother, maternly.</div><div>FATHER - Looks 50s, Des’ father, patronly.</div></div></div>
<div><div>The Answering Machine</div><div>An epistolary romance set in the answering machine of a party guy's college dorm room.</div><div>Target Audience: Teen (Age 14 - 18), Young Adult (Age 18 - 23), Adult</div><div>Cast Size: 2M, 1F</div><div>Setting: A college town, 1992</div><div>Themes: Dating, College Romance, Alcoholism</div><div>Subgenre: Romantic Comedy</div><div>Style: Pop/Rock</div><div>Caution: Mild Adult Themes; Alcohol Use</div><div>Duration: Approx 10 minutes</div><div>Additional Resources: Accompaniment Tracks</div></div>	<div><div>THE ANSWERING MACHINE</div><div>- Billing Credits</div><div>- Libretto</div><div>- Piano / Vocal Score</div><div>- Performance Accompaniment Tracks w/ Cue Sheet</div><div>- Orchestrations: o Bass; o Drums; o Electric Guitar; o Guitar; o Keyboard</div><div><div>BEN - 19 years old, a college student. Lovable party boy who is always up for a good time. He is warm hearted, good-natured and always the life of the party, although secretly desperate to find true love.</div><div>LAUREN - 19 years old, a college student. She’s strong, independent and intelligent. She can let her hair down and have a good time, but is sensible enough to know when to stop. She has a life plan, and good luck to anyone who tries to stop her.</div><div>STAFFORD - 19 years old, a college student. He is the party boy who refuses to grow up and has come to college to get away from his strict parents, nothing takes precedence over partying and drinking.</div></div></div>
<div><div>The Charm</div><div>A pair of newlyweds, fresh from a fairy tale wedding, are struck by a very modern fear: how will they know that they will always love each other? With the help of a wizard, an international road trip, and one very special pair of underwear, the couple finds true happiness where they least expect it. “The Charm” is a lyrical and whimsical piece based on the story “The Talisman” by Hans Christian Andersen.</div><div>Target Audience: Teen (Age 14 - 18), Young Adult (Age 18 - 23), Adult</div><div>Cast Size: 3M, 2F</div><div>Setting: A series of fairytale kingdoms, The Past</div><div>Themes: Fairy Tales, Love, Marriage</div><div>Subgenre: Fables/Folktales, Farce, Romantic Comedy, Fantasy, Adaptation, Adventure, Period</div><div>Style: Classical/Standard Musical Theatre</div><div>Caution: Mild Adult Themes, Alcohol Use</div><div>Duration: Approx 12 Minutes</div><div>Additional Resources: N/A</div></div>	<div><div>THE CHARM</div><div>- Billing Credits</div><div>- Libretto</div><div>- Piano / Vocal Score</div><div>- Single, Color Logo Artwork (PNG)</div><div>- Performance Accompaniment Tracks w/ Cue Sheet</div><div>- Orchestrations: o Full Score; o Bassoon; o Clarinet Bb; o Double Bass; o Flute; o Horn in F; o Oboe; o Percussion; o Piano; o Tenor Trombone; o Trumpet Bb; o Viola; o Violin I; o Violin II; o Violincello</div><div><div>HE – a newly-married fairy tale prince. A genuine, kind man. Tenor, any age, sings solo to an F, and a high Ab with the ensemble.</div><div>SHE – a newly-married fairy tale princess. An assertive, confident woman. Soprano, any age, sings from middle C to a brief high Bb.</div><div>CHARACTER MAN - Track covers the French, Italian, and Egyptian men. Bari-tenor, any age, sings solo to a C, and a high Ab with the ensemble.</div><div>CHARACTER WOMAN – Track covers the French, Italian, and Egyptian women. Mezzo-soprano, any age, sings solo from low G to Eb, and high Ab with the ensemble.</div><div>THE WIZARD – Stately and wise. Baritone/bass, any age, sings from a low Ab to a D. Also sings the “Italian children” voices (in falsetto) along with pianist and any other actors who can be blocked to be turned upstage at that moment.</div></div><div>NOTE: The Character Man and Character Woman tracks can be divided up to create more roles.</div></div>

<div><div><div>The Facebook Fighter</div><div>A bitter 30-year-old misanthrope makes continuous attempts at human connection the only way he knows how: by antagonizing people on Facebook. After he alienates his "friends" one by one with incendiary political rants, snobbish pop culture opinions, and flat-out viciousness, he realizes too late that his brash and frank online persona has pushed everybody away and left him all alone in a void of existential loneliness & social media silence.</div><div>Target Audience: Teen (Age 14 - 18), Young Adult (Age 18 - 23), Adult</div><div>Cast Size: 4M, 3F, Flex Chorus</div><div>Setting: Present day, on Facebook</div><div>Themes: Current Events, Friendship, Politics, Media, Feminism</div><div>Subgenre: Satire</div><div>Style: Contemporary Musical Theatre</div><div>Caution: Strong Language</div><div>Duration: Approx 10 Minutes</div><div>Additional Resources: Accompaniment Tracks</div></div></div> <div><div><div>THE FACEBOOK FIGHTER</div><div>- Billing Credits</div><div>- Libretto</div><div>- Piano / Vocal Score</div><div>- Single, Color Logo Artwork (JPEG)</div><div>- Performance Accompaniment Track w/ Cue Sheet</div><div>GARON - 30, antagonistic and opinionated line cook</div><div>BETH - 25, radical third wave feminist, no time for bullshit</div><div>DEVIN - 28, lover of Arrested Development and The Decembrists.</div><div>JOLIE - 28, Devin’s friend who equally loves these things</div><div>JACOB - 30, sensitive sweet man who leans on his friends</div><div>RICHARD - 45, paranoid about photos/video being appropriated</div><div>LINDSAY - 24, in a relationship with a much older man</div><div>CARLY - 32, expectant mother</div><div>ROB - 35, expectant father</div><div>SUSAN - 30, lover of Pilates</div><div>MIKE - 45, alpha Bronco’s fan</div><div>The following roles are doubled: BETH/CARLY, DEVIN/ROB, JOLIE/SUSAN, RICHARD/MIKE</div></div></div>
<div><div><div>The Hipster Sister</div><div>Brooklyn, 2015. Chelsea is getting fed up with her slacker singer-songwriter sister, Jackie, and it's time she moved out.</div><div>Target Audience: Teen (Age 14 - 18), Young Adult (Age 18 - 23), Adult</div><div>Cast Size: 1M, 2F</div><div>Setting: Brooklyn, Present</div><div>Themes: Family, Sisters</div><div>Subgenre: Contemporary</div><div>Style: Contemporary Musical Theatre</div><div>Caution: Strong Language</div><div>Duration: Approx 10 Minutes</div><div>Additional Resources: Accompaniment Tracks</div></div></div> <div><div><div>THE HIPSTER SISTER</div><div>- Billing Credits</div><div>- Libretto</div><div>- Piano / Vocal Score</div><div>- Single, Color Logo Artwork (JPEG)</div><div>- Performance Accompaniment Tracks w/ Cue Sheet</div><div>- Orchestrations: o Bass / Electric Bass; o Drums; o Guitar; o Strings</div><div>CHELSEA - 33 years old, an actuary.</div><div>JACQUELINE - 30 years old, a singer-songwriter and former barista.</div><div>WALTER - 35 years old, Chelsea’s well-meaning boyfriend.</div><div>VOICES - The voices that join in at the end.</div></div></div>
<div><div><div>The Only Thing That Matters</div><div>Three adult sisters have dinner together at one of their homes in the suburbs. Kerri, the middle child and black sheep of the family is determined to not be undermined by the judgments and critiques of her two more well-adjusted and successful sisters. But as soon as alcohol and discussions of social issues descend upon the evening, all bets are off.</div><div>Target Audience: Teen (Age 14 - 18), Young Adult (Age 18 - 23), Adult</div><div>Cast Size: 3F</div><div>Setting: Dining Room, Brentwood, CA, Present Day.</div><div>Themes: Family, Current Events, Politics, Women’s Interest</div><div>Subgenre: Kitchen Sink Drama</div><div>Style: Contemporary Musical Theatre</div><div>Caution: Intense Adult Themes, Strong Language</div><div>Duration: Approx 10 Minutes</div><div>Additional Resources: Accompaniment Tracks</div></div></div> <div><div><div>THE ONLY THING THAT MATTERS</div><div>- Billing Credits</div><div>- Libretto</div><div>- Piano / Vocal Score</div><div>- Single, Color Logo Artwork (PNG)</div><div>- Performance Accompaniment Track w/ Cue Sheet</div><div>KERRI - Female Identifying, early 30’s, recovering alcoholic with two weeks sober. Vulnerable, reactive, damaged by past traumas.</div><div>ALLY - Female Identifying, late 30’s, upper middle class suburban mother. Always moving, highly judgmental, privileged.</div><div>MYSTIE - Female Identifying, late 30’s, career woman, lives life on her own terms, highly judgmental, somewhat bratty.</div></div></div>
<div><div><div>Welcome to Ridgington</div><div>The perfect town of Ridgington, everyone follows a strict regimen of routines, rituals, and traditions. Today is Cleansing Day, the only time when each family has the right to tell each other the truth that's been pent up all year.</div><div>Target Audience: Teen (Age 14 - 18), Adult</div><div>Cast Size: 2M, 2F</div><div>Setting: Present day. The town of Ridgington, a commune</div><div>Themes: Parenting/Family, Relationships, Marriage</div><div>Subgenre: Fables/Folktales, Fantasy, Faith Based, Experimental</div><div>Style: Contemporary Musical Theatre</div><div>Caution: Mild Language</div><div>Duration: Approx 11 Minutes</div><div>Additional Resources: N/A</div></div></div> <div><div><div>WELCOME TO RIDGINGTON</div><div>- Billing Credits</div><div>- Libretto</div><div>- Piano / Vocal Score</div><div>- Single, Color Logo Artwork (JPEG)</div><div>PATRICK - A suit and tie middle-aged dad.</div><div>KAREN - A middle-aged "Stepford" housewife.</div><div>BEN - The son and older brother.</div><div>HAILEY - The daughter and younger sister.</div></div></div>
<div><div><div>What's Your Wish</div><div>A devised folk musical in the style of Grimm's Fairy Tales. It's about two boys who are sucked into a magical storybook and try to make it out alive!</div><div>Target Audience: Appropriate for all audiences</div><div>Cast Size: 3M, 2F</div><div>Setting: A suburban home and a magical storybook land, the present.</div><div>Themes: Adolescence/Childhood, Death, Fairy Tales, Friendship</div><div>Subgenre: Fantasy, Adventure, Fables/Folktales</div><div>Style: Musical Theatre, Folk Americana</div><div>Caution: N/A</div><div>Duration: Approx 10 Minutes</div><div>Additional Resources: N/A</div></div></div> <div><div><div>WHATS YOUR WISH</div><div>- Billing Credits</div><div>- Libretto</div><div>- Full Score</div><div>- Single, Color Logo Artwork (JPEG or PNG)</div><div>- Performance Accompaniment Tracks w/ Cue Sheet</div><div>- Orchestrations: o Accordion; o Flute; o Guitar; o Mandolin</div><div>NICHOLAS WILKE - A smart, gullible boy, slight build, 16.</div><div>MCKENZIE WILKE - Unapologetically weird sister of Nicholas, goth, 15 - she’s got a big crush on Brian.</div><div>DIANA WILKE - A single, harried, caring mom, mid-30’s.</div><div>BRIAN - A down-to-earth, impulsive boy, improbably bearded, 16.</div><div>WITCH - A powerful, power-hungryEnchantress, with long, billowing robes and a beautiful visage. Appears to be in her 30’s.</div><div>GORT - All wings and sparkles, she is a Fairy with a rebellious streak. Appears to be about 17. A servant to the Witch, she is trapped in a cage.</div><div>NOTE: The same actor can play DIANE and WITCH and the same actor playing MCKENZIE can also play GORT.</div></div></div>

<p>Big Ass Secret</p> <p>Jimmy is an average high school student who writes in his private journal about a big ass secret. It’s something he’s known about himself since he was eight years old, but hasn’t had the courage to tell anyone. When he leaves his journal behind in class for anyone to find, Jimmy's whole world turns upside down.</p> <p>Target Audience: Teens, Adults, Any Age</p> <p>Cast Size: 3M, 2F</p> <p>Setting: High School</p> <p>Themes: Friendship, Love, Heartache, LGBTQ+, Coming Out, Keeping Secrets</p> <p>Subgenre: Comedy</p> <p>Style: Pop/Rock</p> <p>Caution: N/A</p> <p>Duration: Approx 10 Minutes</p> <p>Additional Resources: Accompaniment Tracks,</p> <p>Alternate Lower Keys for songs “Big Ass Secret” and “So This is Love”</p>	<p>BIG ASS SECRET</p> <ul style="list-style-type: none">- Billing Credits- Libretto- Piano/Vocal Score- Performance Accompaniment Tracks- Demo Tracks- Video- Sibelius Files- Alternate Keys <ul style="list-style-type: none">• JIMMY - teen male, White, an unassuming teen with a big ass secret, pop tenor or baritenor• TYLER - teen male, Black, an athletic teen, pop tenor or baritenor• OLIVIA - teen female, Latina, a studious, gossipy teen, pop mezzo• BANITA - teen female, Indian, an emo goth socialized loner teen, pop mezzo• TIMOTHY OUYANG - teen male, East Asian or Mixed, a stylishly dressed, handsome teen, pop• tenor or baritenor <p>Characters are diverse American teenagers</p>
<p>The Carousel Of Inevitability And Certain Foreboding</p> <p>On their fifth date at the 1964 World’s Fair in Flushing, Queens, Jimmy and Donna take a ride on the attraction “The Carousel of Inevitability and Certain Foreboding”.</p> <p>This audio-animatronic-filled journey through mankind’s technological accomplishments uncannily mirrors their own life (albeit more focused on the wonder of General Electric’s kitchen appliances), and before they know it they can’t tell the difference between reality and fantasy. But don’t worry, capitalism still wins in the end!</p> <p>Target Audience: All Ages</p> <p>Cast Size: 4M, 2F</p> <p>Setting: The World’s Fair in Flushing Meadows, Queens, 1964</p> <p>Themes: Family, Capitalism, American Values, Technology, Love</p> <p>Subgenre: Satire, Fantasy, Light Horror</p> <p>Style: Musical Theatre, Pastiche</p> <p>Caution: N/A</p> <p>Duration: Approx 25 Minutes</p> <p>Additional Resources: N/A</p>	<p>THE CAROUSEL OF INEVITABILITY AND CERTAIN FOREBODING</p> <ul style="list-style-type: none">- Billing Credits- Libretto- Piano/Vocal Score <ul style="list-style-type: none">• DONNA: A young 1960s woman who is wondering whether she should break away from the norms that society expects from women of the era.• JIMMY: A standard, happy-go-lucky young 1960s male. Essentially wholesome enough to be on a `60s sitcom.• KURT DIGSBY AUDIO-ANIMATRONIC: An Audio Animatronic older male. Distinguished, the creator of the Digsbyland Theme Park and the Digsby Corporation. In the finale, he appears as a frozen disembodied head.• ANNA AUDIO-ANIMATRONIC: The animatronic version of Donna if she had been a `60s sitcom character.• TIMMY AUDIO-ANIMATRONIC: The animatronic version of Jimmy, very similar to him.• JUNIOR AUDIO-ANIMATRONIC: The plucky son who is optimistic and excited about everything, even dying in war. Returns as a “robot” version of himself without a personality or the ability to modulate the tone of his voice.
<p>How To Draw Frankenstein</p> <p>With the help of his best, and imaginary friend, Frank, a young boy finds comfort and strength through art as he deals with his father's loss.</p> <p>Target Audience: Teens, Adults, Any Age</p> <p>Cast Size: 2M, 2F</p> <p>Subgenre</p> <p>Setting: Present, Mike’s House</p> <p>Themes: Childhood, imaginary friends, grief, loss, sibling bonds</p> <p>Subgenre:</p> <p>Style: Musical Theatre</p> <p>Caution: N/A</p> <p>Duration: Approx 10 Minutes</p> <p>Additional Resources: N/A</p>	<p>HOW TO DRAW FRANKENSTEIN</p> <ul style="list-style-type: none">- Billing Credits- Libretto- Piano/Vocal Score <ul style="list-style-type: none">• MIKE* - six-year-old male, in his own little world• FRANK - ageless male imaginary friend, green with a voice like Cookie Monster• ERIN* - nine-year-old female, insufferable know-it-all big sister• MOM - mid-thirties female, a concerned mother, non-singing <p>*Children need not be played by actual children</p>
<p>Humpty's Hatching Day</p> <p>Everyone knows how Humpty Dumpty’s story ended, but why did Humpty climb the wall in the first place? Spend ten minutes with Humpty, Jack Sprat (Humpty’s best friend), Jill (Humpty’s secret crush), Itsy Bitsy Spider (Humpty’s frenemy), and Black Sheep (DJ extraordinaire), on the most important day (and night) of a young Egg’s life.</p> <p>Target Audience: Teens, Adults, Any Age</p> <p>Cast Size: 3M, 2F</p> <p>Setting: A magical kingdom</p> <p>Themes: Friendship, Love, Heartache, Confidence, Self-Discovery</p> <p>Subgenre: N/A</p> <p>Style: 90’s Hip Hop/R&B</p> <p>Caution: N/A</p> <p>Duration: Approx 10 Minutes</p> <p>Additional Resources: Instrumental Tracks for Performance, Sheet music and Performance Tracks.</p>	<p>HUMPTY’S HATCHING DAY</p> <ul style="list-style-type: none">- Billing Credits- Libretto- Piano/Vocal Score- Accompaniment Tracks- Full Show Demo- Drum Sounds <ul style="list-style-type: none">• HUMPTY DUMPTY (HUMPTY or HUMP), a shy yet lovable Egg waiting to hatch and become a strong, confident bird (R&B tenor range)• JACK SPRAT, Humpty's best friend (R&B baritone or baritenor)• JILL, Humpty's friend and secret crush (R&B mezzo or soprano)• ITSY BITSY SPIDER (BITSY), a wily trickster who means well...or do they (legit, pop, or R&Bsoprano)• BLACK SHEEP, the best DJ and hip-hop hype person (non-singing, could be any voice type but enthusiasm and rapping is a must) <p>*Aside from Jack and Jill, the rest of the characters are not gender specific. Casting can be diverse but respectful of the musical style and culture.</p>
<p>The Jingle Writer</p> <p>"The Jingle Writer" follows Javier, a struggling pianist balancing career challenges and strained family ties with his hardworking mother Dolores. Through volunteering at a senior center, Javier forms a meaningful bond with Ambrose, an elderly resident, and finds solace in teaching music. As Javier reconciles with his mother and embraces his role as a music teacher at the center, the story highlights themes of family dynamics, self-discovery, and the transformative power of human connection and music.</p> <p>Target Audience: Ages 13+</p> <p>Cast Size: 2M, 3F, 3-6 ENSEMBLE</p> <p>Setting: An apartment and a senior center.</p> <p>Themes: Self-acceptance, family dynamics, mental health and depression, search for purpose, resilience and hope</p> <p>Subgenre: N/A</p> <p>Style: Contemporary Musical</p> <p>Caution: Some swearing and use of a slur</p> <p>Duration: Approx 20 Minutes</p> <p>Additional Resources: N/A</p>	<p>THE JINGLE WRITER</p> <ul style="list-style-type: none">- Billing Credits- Libretto- Piano/Vocal Score <ul style="list-style-type: none">• DOLORES: Female-identifying. 40s-50s. Javiers mother. Hardworking, snappy, tries her best.• JANET: Female-identifying. 50s. Manager of the senior center.• AMBROSE: Female-identifying. A lonely, kindhearted resident of the senior center. Plays some light piano.• LUIS: Male-identifying. 40s. Javier’s machismo father.• JAVIER: Male-identifying. 20s. Soft-spoken, a skilled pianist.• ENSEMBLE: 3-6 seniors of all genders

<p>Letters From May</p> <p>This is the story of May Dalton and her journey from humble beginnings to fame and her eventual downfall over the course of sixty years.</p> <p>Target Audience: High school (age 13-17), Young adult (age 18-23), Adult</p> <p>Cast Size: 3F, 2M</p> <p>Setting: Modern Day, a museum</p> <p>Themes: Ambition, Art, Love</p> <p>Subgenre: N/A</p> <p>Style: Contemporary Musical Theatre</p> <p>Caution: N/A</p> <p>Duration: Approx 10 Minutes</p> <p>Additional Resources: Accompaniment Tracks</p>	<p>LETTERS FROM MAY</p> <ul style="list-style-type: none">- Billing Credits- Libretto- Piano/Vocal Score- Accompaniment Tracks- Full Show Demo <ul style="list-style-type: none">• MAY DALTON - 20s to 30s, female-identifying. Begins in her early 20s and ages to early 80s. ENSEMBLE 1 - Any age. Plays a museum docent, agent, newspaper reporter, critic. Non- singing. ENSEMBLE 2 - Any age. Plays a museumgoer, townsperson, assistant, critic. Non-singing.• ENSEMBLE 3 - Any age. Plays a museumgoer, painter, reporter, critic. Non-singing.• ENSEMBLE 4 - Any age. Plays a boss, gallerist, reporter, assistant. Non-singing.
<p>Magnolia Creek</p> <p>A noted believer in the supernatural and a noted skeptic are forever changed after a chance connection at Magnolia Creek: a place long held by legend to be haunted.</p> <p>Target Audience: Appropriate for all audiences</p> <p>Cast Size: 1M, 1F</p> <p>Setting: A rural creek in the Southern United States, Present</p> <p>Themes: Supernatural, Romance, Connection, Loss, Belief, Skepticism</p> <p>Subgenre: N/A</p> <p>Style: Contemporary Musical Theatre, Folk, Rock</p> <p>Caution: N/A</p> <p>Duration: Approx 10 Minutes</p> <p>Additional Resources: Accompaniment Tracks</p>	<p>MAGNOLIA CREEK</p> <ul style="list-style-type: none">- Billing Credits- Libretto- Piano/Vocal Score- Accompaniment Tracks- Demo Tracks- Music XML Tracks <ul style="list-style-type: none">• ALICE - Late teens to late 20’s, quick-witted and logical• DAVIS - Late teens to late 20’s, quirky and passionate
<p>Mission To The Moon: A Tardigrade Tale</p> <p>Embark on a thrilling lunar adventure with "The Indestructible Tardigrade" as five unique tardigrades blast off to the moon on the Beresheet Lunar Lander. Faced with challenges, their journey takes an unexpected turn as they contemplate building a new civilization. Get ready for a cosmic tale of resilience, exploration, and unforeseen opportunities!</p> <p>Target Audience: Appropriate for all ages</p> <p>Cast Size: 5*</p> <p>Setting: Spaceship and Lunar Surface</p> <p>Themes: Bravery, Teamwork, Friendship, Environmental, Space, Science</p> <p>Subgenre: Fantasy, Comedy, Family</p> <p>Style: Contemporary Musical Theatre</p> <p>Caution: N/A</p> <p>Duration: Approx 18 Minutes</p> <p>Additional Resources: Accompaniment Tracks</p>	<p>MISSION TO THE MOON: A TARDIGRADE TALE</p> <ul style="list-style-type: none">- Billing Credits- Libretto- Piano/Vocal Score- Accompaniment Tracks- Demo Tracks- Sibelius Files <ul style="list-style-type: none">• ACE - a brave and courageous tardigrade, any gender or ethnicity• VESPOR - an anxious tardigrade, any gender or ethnicity• STIRLING - , a contentious tardigrade, any gender or ethnicity• RIVER - the peacekeeper tardigrade, any gender or ethnicity• GLITZ - a “showbiz” tardigrade, any gender or ethnicity <p>Casting Note: Please cast individuals of varying genders, ethnicities, race, disabilities, etc... Anyone who can sing, dance, & act the roles can play a tardigrade.</p>
<p>Moonphase</p> <p>Hjuki and Bil’s home planet is losing light, so the siblings must travel to a nearby planet to fetch a pail of moonrays to bring back home before nightfall. But a mysterious man has other plans for them.</p> <p>Target Audience: All Ages</p> <p>Cast Size: 2M, 1F</p> <p>Setting: Another</p> <p>Themes:Family, Space Travel</p> <p>Subgenre: N/A</p> <p>Style: Dream Pop</p> <p>Caution: N/A</p> <p>Duration: Approx 13 Minutes</p> <p>Additional Resources: Plunk Tracks, Demos</p>	<p>MOONPHASE</p> <ul style="list-style-type: none">- Billing Credits- Libretto- Piano/Vocal Score <ul style="list-style-type: none">• HJUKI - Teen male, a confident young man with a jock persona, protective of his sister. Pop tenor.• BIL - Teen female, a bookish young woman who loves her brother. Pop soprano.• MANI - Adult male or non-binary character, The Man in the Moon. A mysterious and alluring showman with a pure heart. Bass, or Tenor/Low Alto.
<p>Old Man In The Wheelchair</p> <p>Shelly worries that she and her elderly father have never really connected, and time is running out. She compensates by splurging on expensive gifts for him, but this puts a strain on her marriage. It seems her spouse doesn’t understand her any better than her emotionally distant father ever did. But what SHELLY can’t see is the complex inner life that awakens in her slumbering father whenever he smells the lavender cologne that his nursing home aide wears. Memories of WWII and foreign romance enfold him even as SHELLY’s lonely frustration engulfs her. Then, as they each dive deeper into their own heads, father and daughter accidentally find each other for a very meaningful moment.</p> <p>Target Audience: Appropriate for all audiences</p> <p>Cast Size: 2F, 1M</p> <p>Setting: Assisted Living Residency, Present</p> <p>Themes: Aging, Father/Daughter Relationship, Marriage</p> <p>Subgenre: N/A</p> <p>Style: Indie Rock</p> <p>Caution: N/A</p> <p>Duration: Approx 10 Minutes</p> <p>Additional Resources: N/A</p>	<p>OLD MAN IN THE WHEELCHAIR</p> <ul style="list-style-type: none">- Billing Credits- Libretto- Piano/Vocal Score- Plunk Tracks <ul style="list-style-type: none">• OLD MAN IN THE WHEELCHAIR - Male, Shelly’s father, plays 80’s/90’s, any ethnicity.• SHELLY - Female, to play 50’s - 60’s, any ethnicity• PAULINA - Female, 40’s - 60’s, Health Aide, any ethnicity

<p>Ordinary</p> <p>A Clown and a Bearded Lady yearn to run away from the circus they work in and be just like everybody else: Ordinary.</p> <p>Target Audience: Appropriate for All Audiences</p> <p>Cast Size: 1F, 1M</p> <p>Setting: A Circus</p> <p>Themes: Dreams, Underdog, Friendship</p> <p>Subgenre:</p> <p>Style: Musical Theatre</p> <p>Caution: N/A</p> <p>Duration: Approx 10 Minutes</p> <p>Additional Resources: N/A</p>	<p>ORDINARY</p> <ul style="list-style-type: none">- Billing Credits- Libretto- Piano/Vocal Score <p>• CLOWN - A male in a clown suit and red nose.</p> <p>• BEARDED LADY - A female with a beard.</p>
<p>Peach Melba</p> <p>Mary Mallon is one of the cooks at Sloane Hospital for Women in New York City in 1915. She's preparing her signature dish, Peach Melba, but grows increasingly nervous when she recognizes the strange visitor that's come to investigate the recent typhoid outbreak.</p> <p>Target Audience: Appropriate for all audiences</p> <p>Cast Size: 2F, 2M</p> <p>Setting: New York City, 1915</p> <p>Themes: History, New York City, Diseases</p> <p>Subgenre: N/A</p> <p>Style: Classic/Standard Musical Theatre</p> <p>Caution: N/A</p> <p>Duration: Approx 10 Minutes</p> <p>Additional Resources: Accompaniment Tracks</p>	<p>PEACH MELBA</p> <ul style="list-style-type: none">- Billing Credits- Libretto- Piano/Vocal Score- Plunk Tracks- Accompaniment Tracks- Demo Tracks <p>• MARY MALLON: Late 30s/early 40s. Mezzo/Belter. The infamous Typhoid Mary. Boisterous and brazen, yet kind-hearted. Hard-working and devoutly Catholic. An Irish-born American who lives and works in New York as a hired chef. She's publicly known as an asymptomatic carrier of Typhoid and has previously been arrested and quarantined on North Brother Island.</p> <p>• MARGARET: 20s/30s. Alto/Mezzo. Brooklyn native. As Mary's co-worker at the hospital kitchen, Margaret goes around delivering meals to the patients. She has been working at the hospital for years now. She is overly nice and a bit of a gossip — she's seen it all and would be happy to tell you about it. Just like everyone in New York, she's read all the headlines about Typhoid Mary. She's lost family members to typhoid.</p> <p>• GEORGE SOPER: 30s/40s. Baritone. Big mustache. A sanitation engineer who had worked for the New York City Department of Health. He spends his time trying to discover the causes of urban diseases as a sort of public health private investigator. Eight years earlier, he tracked down and identified Mary as the cause of a Long Island typhoid outbreak, which led to her first quarantine. He has now been tasked with discovering the cause of a typhoid outbreak at Sloane Hospital for Women. A clinical man with a nervous disposition. He is not eager to arrest Mary for a second time but knows it is his duty.</p> <p>• A POLICE OFFICER: 30s/40s. A silent, imposing figure of the law. He is accompanying Soper on his investigation of the hospital.</p>
<p>Pigeons Mate For Life</p> <p>In a whimsical tale, Jane, unlucky in love, finds solace in her charming pigeon, Santino. When she meets Max at the Philly Pigeon Phanciers Club, their shared passion for pigeons leads to a budding romance, challenging them to learn from their feathered friends and give love another chance despite their differences.</p> <p>Target Audience: Appropriate for all audiences</p> <p>Cast Size: 2M, 2F</p> <p>Setting: Various locations in and around Philadelphia. The present.</p> <p>Themes: Relationships, Love, Cooperation, Commitment, Animals, Companionship</p> <p>Subgenre: Romantic Comedy</p> <p>Style: Musical Theater, Pop and a hint of Irish Fold</p> <p>Caution: N/A</p> <p>Duration: Approx 10 Minutes</p> <p>Additional Resources: Accompaniment Tracks</p>	<p>PIGEONS MATE FOR LIFE</p> <ul style="list-style-type: none">- Billing Credits- Libretto- Piano/Vocal Score- Accompaniment Tracks- Demo Tracks- Finale Files <p>• MAX: Male-identifying. He has trouble with relationships, has a female pigeon, Bernadette, and attempts a relationship with Jane.</p> <p>• JANE: Female-identifying. She's unlucky in love, has a male pigeon companion, Santino, meets an eligible guy, Max, and embarks on a relationship with him.</p> <p>• SANTINO: Male-identifying. He's Jane's charming pigeon who falls in love with Bernadette, Max's pigeon, and mates with her for life.</p> <p>• BERNADETTE: Female-identifying. She's Max's pigeon who has been in mourning for her pigeon-companion, Mandy, falls in love with Santino and mates with him for life.</p> <p>*The Jane and Max characters can be of any age over the mid-20's; the pigeons can be any age over 13.</p>
<p>RansomWHERE?!</p> <p>When Grandma accidentally downloads some nasty spyware to her computer, her photos may be lost unless she is able to pay a ransom in Bitcoin. Grandma has no idea what that is - but luckily her grandson Thomas is pretty good with computers.</p> <p>Target Audience: Appropriate for all ages</p> <p>Cast Size: 1M, 2F, 1X</p> <p>Setting:</p> <p>Themes:</p> <p>Subgenre:</p> <p>Style:</p> <p>Caution:</p> <p>Duration:</p> <p>Additional Resources: Instrumental Tracks, Melody Tracks</p>	<p>RANSOMWHERE?!</p> <ul style="list-style-type: none">- Billing Credits- Libretto- Piano/Vocal Score
<p>A Seat At The Table</p> <p>It is often stated that history is written by the winners and their stories, in turn, become the history we are taught. However, during a high school World History class, one student finds the courage to speak up for herself and the missing stories in the history books.</p> <p>Target Audience: Teens, Adults, Any Age</p> <p>Cast Size: 5M, 5F</p> <p>Setting: A high school World History class in California, pre-pandemic.</p> <p>Themes: Equality, Friendship, High school, Adolescence, Racism</p> <p>Subgenre: Musical Theatre</p> <p>Style: Pop/Contemporary Musical Theatre</p> <p>Caution: N/A</p> <p>Duration: Approx 10 Minutes</p> <p>Additional Resources: Accompaniment Tracks, Plunk Tracks, Musx Files</p>	<p>A SEAT AT THE TABLE</p> <ul style="list-style-type: none">- Billing Credits- Libretto- Piano/Vocal Score- Plunk Tracks- Accompaniment Tracks- Demo Tracks- Video- Additional Arrangements; Bows; Individual Songs <p>• MR. SPICER - (White; 30s+) the students high school World History teacher.</p> <p>• CITLALLI HERNANDEZ - (Latiné) a bright, head strong student who feels isolated in her feelings about the lack of representation in history; Bilingual.</p> <p>• GAEL MARTINEZ - (Latiné) one of Citlalli's best friends - headstrong; Bilingual.</p> <p>• CAROLINA (CARO) KAPLAN - (Latiné) one of Citlalli's friends who is empathetic to those around her; Bilingual.</p> <p>• IRIS IBARRA - (Latiné) was once friends with the other Latiné students in her class and has grown up assimilating her whole life and has always felt very self-conscious of her inability to speak Spanish and fit in with her peers.</p> <p>• THOMAS PETERSON - (Black or Afro-Latino) the smartest student in his class who has a crush on Citlalli.</p> <p>• BRYCE NEILSON - (White) a student</p> <p>• KEVIN FRANCIS - (White) a student</p> <p>• LYLA THOMPSON - (White) a student</p> <p>• DAKOTA MILLER - (White) a student</p>

<div><div>Slam!</div><div>"SLAM!" is a dynamic musical exploring the world of graffiti through the eyes of Geo and Daisy, two passionate artists with contrasting styles. As they compete for the same wall space, their clash of egos escalates into a musical battle. However, a surprising twist leads them to collaborate, transcending their differences and celebrating the transformative power of art. Through vibrant performances and a powerful duet, "SLAM!" celebrates individual expression, artistic collaboration, and the ability of art to convey meaningful messages to the world.</div><div>Target Audience: Appropriate for all audiences</div><div>Cast Size: 1M, 1F</div><div>Setting: Down the Street</div><div>Themes: Individual Expression, Collaboration, Art as a Form of Communication, Positive Messaging, Identity and Self-Discovery, Urban Culture and Street Art.</div><div>Subgenre: N/A</div><div>Style: Musical Theater, Pop, and Hip Hop</div><div>Caution: N/A</div><div>Duration: Approx 10 Minutes</div><div>Additional Resources: N/A</div></div>	<div><div>SLAM!</div><div>- Billing Credits</div><div>- Libretto</div><div>- Piano/Vocal Score</div><div><div>DAISY: A graffiti artist in her 20s, tough on the outside, hippie at heart.</div><div>GEO: 20s. A graffiti artist in his 20s.</div></div></div>
<div><div>Starshine</div><div>The stars are going out, and no one is sure why. What is certain is that everything is coming to an end. On the last night of the world, two strangers—Doug and Carol—individually decide to journey to the same secluded hilltop, hoping to find a nice view to watch the remaining stars go out.</div><div>Target Audience: Appropriate for all audiences</div><div>Cast Size: 1M, 1F</div><div>Setting: The last night of the world</div><div>Themes: Space, Relationships, The End of the World</div><div>Subgenre: N/A</div><div>Style: Classic/Standard Musical Theatre</div><div>Caution: N/A</div><div>Duration: Approx 20 Minutes</div><div>Additional Resources: N/A</div></div>	<div><div>STARSHINE</div><div>- Billing Credits</div><div>- Libretto</div><div>- Piano/Vocal Score</div><div>- Plunk Tracks</div><div>- Accompaniment Tracks - - Demo Tracks - - Musx Files</div><div><div>CAROL: A headstrong astrophysicist.</div><div>DOUG: An office worker having an existential crisis.</div></div></div>
<div><div>These Walls</div><div>One house, two couples... same people. Liz and Jeff are newlyweds and moving into their new home. Simultaneously, on a separate plane of reality 35 years in the future, older Liz and Jeff perform a final sweep as they prepare to move out. If only walls could talk...</div><div>Target Audience: Young Adults (Age 18-23), Adults</div><div>Cast Size: 2M, 2F</div><div>Setting: One house, 2 different decades</div><div>Themes: Love, Loss, Grief, Resilience, Family, Home</div><div>Subgenre: N/A</div><div>Style: Contemporary Musical Theatre</div><div>Caution: Brief Language</div><div>Duration: Approx 10 Minutes</div><div>Additional Resources: Piano accompaniment of full score (MP3), Vocal Rehearsal Tracks (MP3)</div></div>	<div><div>THESE WALLS</div><div>- Billing Credits</div><div>- Libretto</div><div>- Piano/Vocal Score</div><div>- Plunk Tracks</div><div>- Accompaniment Tracks - Demo Tracks</div><div><div>JEFF - early sixties</div><div>YOUNG LIZ - mid to late twenties</div><div>YOUNG JEFF - mid to late twenties</div><div>LIZ - early sixties</div></div></div>
<div><div>Time Travel Makes Complete Sense</div><div>When Crystal's blind date raises a yellow flag within the first minute of their date, Crystal pops into the bathroom and is indecisive about whether she should escape out the window. Luckily she’s about to be visited by herself from the future, who has an opinion on what she should do. Followed by another version of herself from the future with advice. Followed by multiple successive versions of herself, each with their own thought of how the date should go... or should have gone. Will Crystal learn to stop taking advice, even her own?</div><div>Target Audience: All ages</div><div>Cast Size: 2M, 6F</div><div>Setting: A Magnolia Bakery. Now, and not in the future. Not yet.</div><div>Themes: Regret, dating, science, technology, love, absurdism</div><div>Subgenre: Time Travel, Romantic Comedy</div><div>Style: Musical Theatre, Pastiche</div><div>Caution: N/A</div><div>Duration: Approx 25 Minutes</div><div>Additional Resources: Melody Guides, Demos, Backing Tracks</div></div>	<div><div>TIME TRAVEL MAKES COMPLETE SENSE</div><div>- Billing Credits</div><div>- Libretto</div><div>- Piano/Vocal Score</div><div><div>CRYSTAL: Woman in her 20s or 30s on a first date. Extremely indecisive, easily impressionable.</div><div>STERLING: Somewhat awkward but sweet male in his 20s or 30s.</div><div>FUTURE CRYSTAL: Older version of Crystal, maybe by just a few years, maybe a few decades. Indecisiveness has led to regret. Can be older than CRYSTAL or around the same age.</div><div>FUTURE CRYSTAL 2: Same age as Future Crystal, being stifled has led to regret.</div><div>FUTURE CRYSTAL 3: Same age, but from a war-torn version of the future. Is missing an arm, and regret is now replaced with cold unfeelingness.</div><div>FUTURE CRYSTAL 4: Same age, from a happier future, but still isn't happy.</div><div>FUTURE STERLING 4: Married to Future Crystal 4. Fed up with Crystal's indecisiveness and regret.</div><div>BUSGIRL: Probably same age range of the other Future Crystals, and is otherwise enough like the other Future Crystals as possible in order to be convincingly mistaken as one of them.</div></div><div>Note: The future Crystals do not need to look anything like Crystal or the other Future Crystals. In fact, it's funnier if they don't! Same goes for Future Sterling and the Busgirl.</div></div>
<div><div>Video Rental Store</div><div>Larry is a lonely guy who finds solace in his job at his town's forgotten video rental store until a nationwide streaming blackout thrusts the shop into the spotlight as a haven for the community. Amidst the chaos, Larry discovers unexpected friendship with Christine, bonding over their shared love for cinema and realizing that life's twists sometimes mirror the movies they adore.</div><div>Target Audience: Appropriate for all audiences</div><div>Cast Size: 1M, 1F, 1+Ensemble</div><div>Setting: Video rental store in Middle America</div><div>Themes: Escapism, catastrophe, love</div><div>Subgenre: Great American Songbook, Rock</div><div>Style: Musical Theatre</div><div>Caution: N/A</div><div>Duration: Approx 8 Minutes</div><div>Additional Resources: Musx Files</div></div>	<div><div>VIDEO RENTAL STORE</div><div>- Billing Credits</div><div>- Libretto</div><div>- Piano/Vocal Score</div><div>- Musx Files</div><div><div>LARRY: a video rental store employee.</div><div>CHRISTINE: a video rental store customer.</div><div>CUSTOMERS: a flexible chorus of 4+</div></div></div>

<div><div><div>Wanda Does The Water Cycle</div><div>Wanda, a curious young water molecule, goes to explore the surface of her lake—only to evaporate and find herself embarking on an adventure through the water cycle! With the help of new friends, Wanda must learn about the water cycle in order to return home.</div><div><div>Target Audience: Children (Ages 5-8)</div><div>Cast Size: 3-4F, 1M, Optional Flex. Ensemble</div><div>Setting: A Lake and the sky</div><div>Themes: Teamwork, Friendship, Bravery, Purpose</div><div>Subgenre: N/A</div><div>Style: Classic/Standard Musical Theatre</div><div>Caution: N/A</div><div>Duration: Approx 13 Minutes</div><div>Additional Resources: Piano Accompaniment of the full score MP3’s Vocal Rehearsal Tracks MP3s</div></div></div></div> <div><div><div>WANDA DOES THE WATER CYCLE</div><div>- Billing Credits</div><div>- Libretto</div><div>- Piano/Vocal Score</div><div>- Plunk Tracks</div><div>- Accompaniment Tracks - Demo Tracks – Video - Musx Files</div><div><div><div>• WANDA: A precocious young water molecule (mezzo-soprano).</div><div>• FREDDY: A friendly young fish, Wanda’s friend (tenor).</div><div>• MOLLY: A wise water molecule (mezzo-soprano).</div><div>• MOM: Wanda’s well-meaning mom, a water molecule (mezzo-soprano).</div><div>• GRANDMA: Wanda’s spry grandmother, a water molecule (mezzo-soprano).</div><div>• WATER SNAKE: A cheerful water snake (mezzo-soprano).</div><div>• WATER MOLECULE ENSEMBLE: Flexible-size ensemble of water molecules.</div></div><div>*This show can be performed with 4-5 older kids/teens or adult actors, with the option to add an ensemble of younger children</div></div></div></div>
<div><div><div>White Man's Burden</div><div>An extremely dark parody of the murders of unarmed Black men, told through the conceit of a TV commercial for a compilation CD that has a racist title. The deadly tunes on this CD, which sells for \$29.99, include the crooning "Ballad of Emmitt Till," "The Summer of '64," "Jasper Rose" and the rap "The Streets of Bensonhurst." The songs spotlight the lives of true to life victims of hate crimes, James Chaney, Yusef Hawkins, James Byrd Jr. And Emmitt Till. And the Hits keep coming and coming.</div><div><div>Target Audience: Appropriate for ages 13+</div><div>Cast Size: 7M</div><div>Setting: A TV Commercial</div><div>Themes: Race Relationships, Murder, Commercialism, Police Violence, African American Culture, Community</div><div>Subgenre: Political Satire</div><div>Style: Pop/Rock, Hip-Hop, NeoSoul, Doo-Wap, Motown R&B and Musical Theater</div><div>Caution: N/A</div><div>Duration: Approx 15 Minutes</div><div>Additional Resources: N/A</div></div></div></div> <div><div><div>WHITE MAN’S BURDEN</div><div>- Billing Credits</div><div>- Libretto</div><div>- Piano/Vocal Score</div><div>- Full Show Dem</div><div><div><div>• MIKEY MIKE: African American Male, Early 30’s Tenor, and host of the music informercial series Yesteryear Media</div><div>• JIGABOOS:<div><div>• JAMES BYRD JR: African American Male, Early 40's Baritone-Tenor was killed in Jasper, Texas in 1998.</div><div>• JAMES CHENEY: African American Male, Late 20's Tenor, was killed in 1964</div><div>• EMMETT TIL: African American Male, Early Teens, High Tenor, Died in 1955</div><div>• YUSSEF HAWKINS: African American Male, Late Teens, Baritone/ Hip Hop Rap Skills, He died in 1989.</div></div></div><div>• DA CRACKERS:<div><div>• MICHAEL SCHWERNER: White Male, Early 30's, 2nd Tenor, was killed in 1964</div><div>• ANDREW GOODMAN: White Male, Early 20's, High Tenor was killed in 1964</div></div></div></div></div></div></div>